

VERSATILE

5325 URETHANE

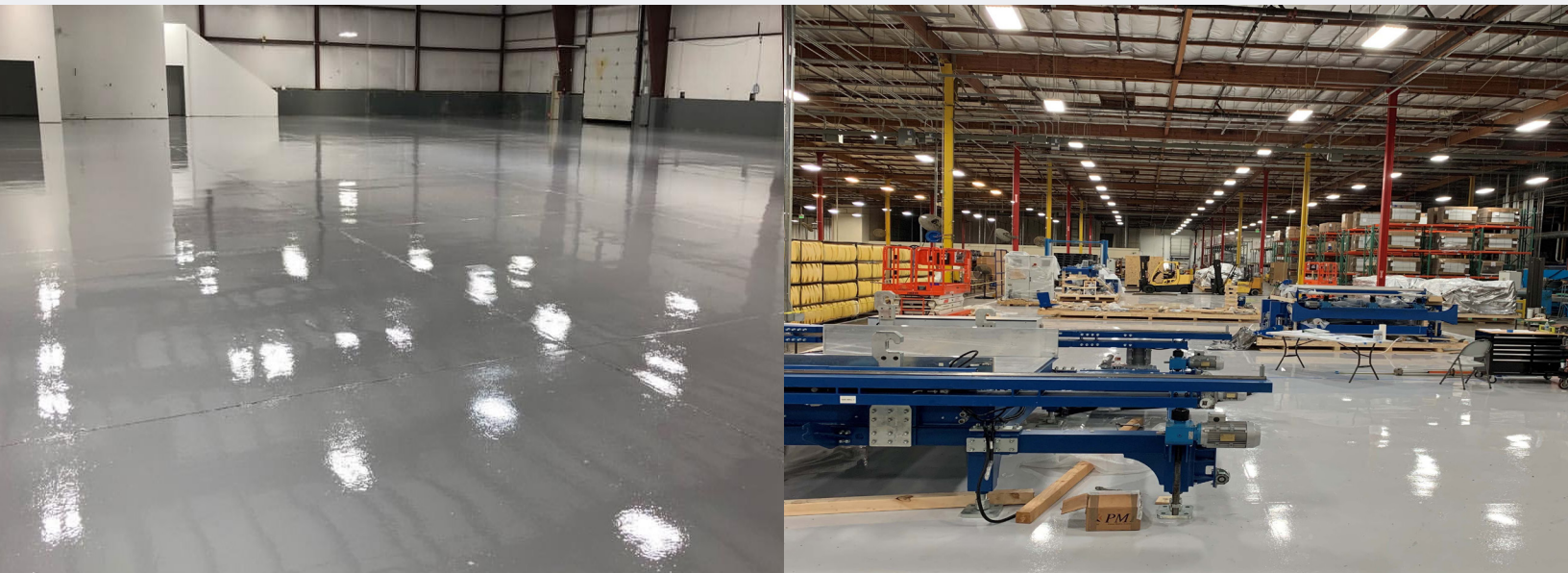
CHEMICAL-RESISTANT FLOOR COATING

5325 Chemical-Resistant Urethane (CRU) Floor Coating is a durable two-component coating that is used for industrial concrete floors. 5325 CRU is formulated to have less than 250g/L VOC. The CRU coating is used in and over industrial floor areas that include aircraft hangars, service bays, petroleum refineries, chemical processing plants, wastewater treatment plants, power utilities, pulp and paper plants, and pharmaceutical facilities.

5325 CRU Floor Coating will provide great protection to concrete floors and concrete floor coatings, offering great chemical resistance, excellent cleanability, and a superior appearance. 5325 CRU can be used as a smooth, high-quality topcoat over most systems or as a standalone floor coating system for flatwork applications.

FEATURES & ADVANTAGES

- 55% Solids, <250 g/L VOC
- 90-minute pot life
- Extremely high-gloss
- Thin- to medium-build
- Great abrasion resistance
- Accelerators are available
- Good resistance to most chemicals
- Non-yellowing
- Will cure at temperatures just above freezing



WWW.VERSATILE.NET
214.807.6878